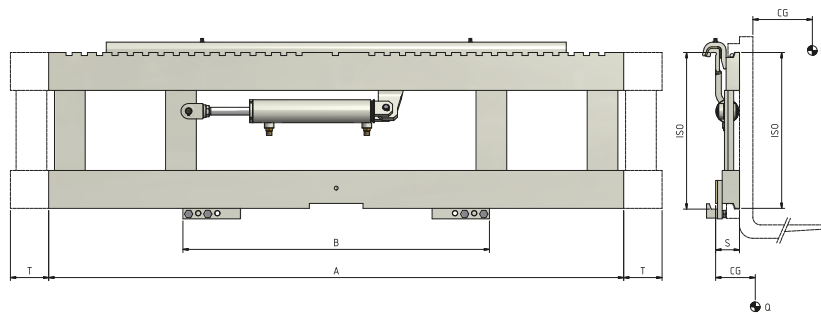


## 108 Reinforced Hook on Sideshift



Hydraulic functions: 1 | Max working pressure: 200 Bar

### Features:

- Reinforced model, installed on the original forklift plates, which can be even narrower than the Sideshift itself.
- Sturdy and long lasting design.
- Fast and accurate lifting and positioning of loads.
- Lower risk of damage to goods and pallets.
- Easier manoeuvres, even in confined spaces.

### Special Equipment:

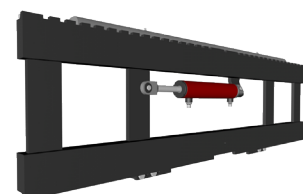
- Special widths and/or strokes.
- Custom made Forks.
- Custom Load made Backrest.

Article	Attachment Capacity	Load Centre of Gravity	ISO	Carriage Width	Minimum Fork Carriage	Stroke	Thickness	Centre of Gravity	Weight
N°	P (kg)	CC (mm)	2328	A (mm)	B (mm)	T (mm)	S (mm)	CG (mm)	Q (kg)
03GFA2C3014	2500	500	2	1300	1000	± 100	62	39	111
03GFA2C3033	2500	500	2	1400	1000	± 100	62	39	118
03GFA2C3016	2500	500	2	1500	1000	± 100	62	39	124
03GLL3C3099	5000	500	3	1400	1000	± 100	80	44	185
03GLL3C3011	5000	500	3	1500	1000	± 100	80	44	205
03GLL3C3014	5000	500	3	1660	1100	± 100	80	45	222
03GLL3C3042	5000	500	3	1800	1255	± 100	80	46	253
03GKR4C3001	4500	600	4	1190	1000	± 100	95	43	182
03GKR4C3002	4500	600	4	1420	1200	± 100	95	45	210
03GR04C3067*	8000	600	4	1190	1100	± 100	94	40	255
03GR04C3001*	8000	600	4	1420	1300	± 100	94	43	290
03GR04C3005*	8000	600	4	1800	1500	± 100	94	51	374
03GR04C5005*	8000	600	4	1800	1600	± 150	94	51	375
03GR04C5006*	8000	600	4	2000	1700	± 150	94	52	400
03GR04C5009*	8000	600	4	2200	1700	± 150	94	52	410
03GR04C5052*	8000	900	4	2200	1800	± 150	94	52	438
03GR04C5050*	8000	1100	4	2400	2000	± 150	94	53	472

\* Reinforced model with lower rollers

Oil flow rate	
ISO	(L/min)
	↔
2	10
3	15
4	18

↔ Shifting



Please refer to our catalogue for further Special Equipment