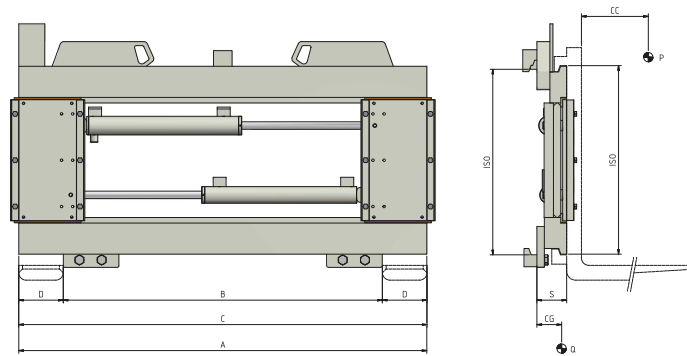


675 Fork Positioner



Hydraulic functions: 1 | Max working pressure: 80 Bar

Features:

- Differentiated Cylinders for a constant and synchronised movement of the forks.
- Fast and accurate lifting and positioning of loads.
- Pressure Relief Valve.
- Recommended use of forks with max length 1500 mm.
- Adjustable plates for use of forks with different sections.
- Reduced damage to pallets and goods.
- Easier manoeuvres even in narrow spaces.

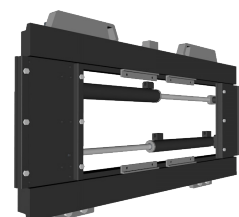
Special Equipment:

- Special widths and/or openings.
- Standard Forks.
- Load Backrest.

Article	Attachment Capacity	Load Centre of Gravity	ISO	Carriage Width	Minimum Fork Carriage	Opening Range		Fork Width	Thickness	Centre of Gravity	Weight
N°	P (kg)	CC (mm)	2328	A (mm)	B (mm)	C Min (mm)	C Max (mm)	D (mm)	S (mm)	CG (mm)	Q (kg)
17SLL3C0004	5000	500	3	1500	880	430	1500	150	80	46	171
17SLL3C0005	5000	500	3	1560	950	430	1560	150	80	46	174
17SLL3C0006	5000	500	3	1660	1050	430	1660	150	80	46	180
17SR04C0001	8000	600	4	1420	1200	560	1420	200	94	49	280
17SR04C0005	8000	600	4	1600	1440	560	1600	200	94	50	339
17SR04C0003	8000	600	4	1800	1500	560	1800	200	94	50	350
17SR04C0004	8000	600	4	2000	1500	560	2000	200	94	50	375

Oil flow rate	
ISO	(L/min)
	↕
3	20
4	45

↕ Opening
↕ Closing



Please refer to our catalogue for further Special Equipment