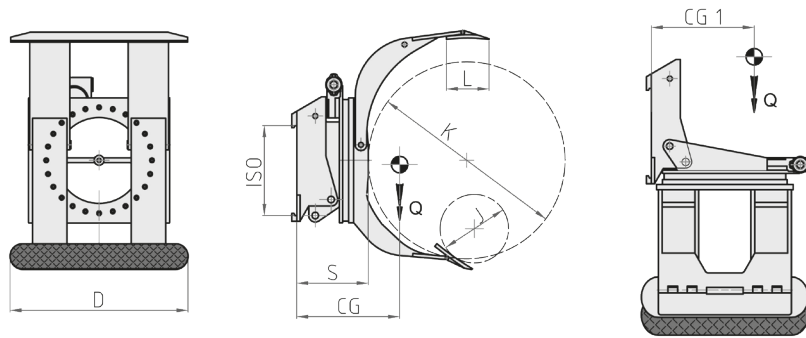


### 342 SF 360° Rotating Roll Clamp with 90° forward tipping and short fixed arm



Hydraulic functions: 3 | Max working pressure: 175 Bar

#### Features:

- Clamping and rotation of one or more overlapping rolls of the same diameter.
- Short fixed arm and long entire arm.
- 360° or 180° rotation with mechanical block.
- 90° frontal tipping to take rolls lying perpendicularly to the Forklift.

#### Special Equipment:

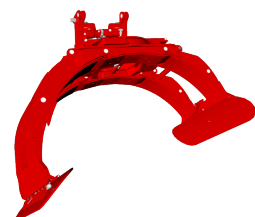
- Custom made capacities/openings.
- Custom made Contact Pads.
- Rotating or Fixed Clamp with parallel arms with reduced dimensions for container loading/unloading operations.

Article	Attachment Capacity	ISO	Rolls Diameter		Contact Pads	Thickness	Centre of Gravity	Centre of Gravity	Weight
			J (mm)	K (mm)					
N°	P (kg)	2328	J (mm)	K (mm)	DxL (mm)	S (mm)	CG (mm)	CG1 (mm)	Q (kg)
21J002G2C0001	900	2	350	1100	700x200	295	265	390	640
21J002G2C0002	900	2	350	1400	700x200	295	270	410	690
21J002Q2C0001	1300	2	400	1150	750x250	295	285	430	705
21J002Q2C0002	1300	2	400	1300	750x250	295	290	440	740
21J00342C0001	2000	2	400	1300	850x250	310	300	470	820
21J00343C0001	2000	3	400	1300	850x250	335	300	470	1020
21J00343C0002	2000	3	400	1600	850x250	335	305	490	1090
21J003G3C0001	2600	3	550	1300	900x250	370	310	500	1195
21J003G3C0002	2600	3	750	1600	900x250	370	320	530	1260
21J003Q3C0001	3000	3	400	1300	1015x300	380	325	525	1510
21J003W4C0001	3600	4	750	1800	1050x300	420	330	575	1840

#### Oil flow rate

ISO	(L/min)		
	Clamping	Rotation	Tipping
2	25	25	20
3	30	25	20
4	35	35	25

- Clamping
- Rotation
- Tipping



Please refer to our catalogue for further Special Equipment